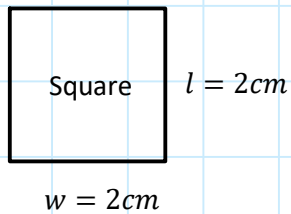


M8 - 5.0 - Area/Perimeter Shapes Notes



$$A = l \times w$$

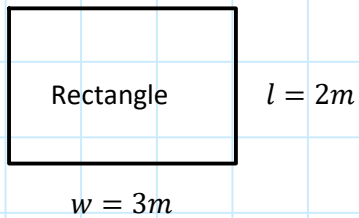
$$A = 2 \times 2$$

$$A = 4\text{ cm}^2$$

$$p = l + l + w + w$$

$$p = 2 + 2 + 2 + 2$$

$$p = 8\text{ cm}$$



$$A = l \times w$$

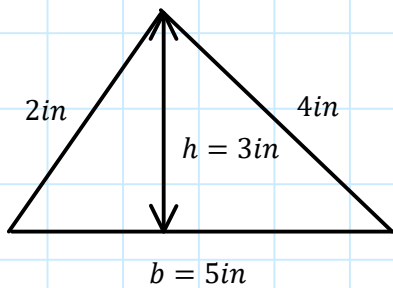
$$A = 2 \times 3$$

$$A = 6\text{ m}^2$$

$$p = l + l + w + w$$

$$p = 2 + 2 + 3 + 3$$

$$p = 10\text{ cm}$$



$$A = \frac{bh}{2}$$

$$A = \frac{5 \times 3}{2}$$

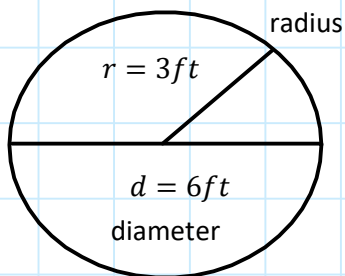
$$A = 7.5\text{ in}^2$$

$$p = a + b + c$$

$$p = 2 + 4 + 5$$

$$p = 11\text{ in}$$

Note: Not true triangle



Perimeter = Circumference

$$A = \pi r^2$$

$$A = \pi(3)^2$$

$$A = 9\pi\text{ ft}^2$$

$$A = 28.27\text{ ft}^2$$

$$C = 2\pi r$$

$$C = 2\pi(3)$$

$$C = 6\pi\text{ ft}$$

$$C = 18.85\text{ ft}$$

Terms of π

$$r = \frac{d}{2}$$