

C11 - 5.2 - Multiplying and Dividing Radicals Notes

$$\begin{aligned} \sqrt[3]{3} \times \sqrt[3]{3} &= \sqrt[3]{3 \times 3} \\ &= \sqrt[3]{9} \\ &= 3 \end{aligned}$$

$$\begin{aligned} 7 \times \sqrt{5} &= 7\sqrt{5} \\ \sqrt{5} \times 7 &= 7\sqrt{5} \\ 13.23 &= 13.23 \end{aligned}$$

$$\begin{aligned} \sqrt[3]{5} \times \sqrt[3]{3} &= \sqrt[3]{5 \times 3} \\ &= \sqrt[3]{15} \end{aligned} \quad 3.87 = 3.87$$

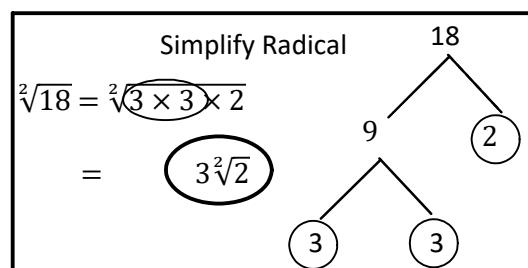
$$\begin{aligned} 3^2\sqrt{7} \times 2^2\sqrt{3} &= 3 \times 2^2\sqrt{7 \times 3} \\ &= 6^2\sqrt{21} \\ 27.50 &= 27.50 \end{aligned}$$

Multiply Coefficients
Multiply Radicands

$$2 \times 5\sqrt{3} = 10\sqrt{3} \quad 17.32 = 17.32$$

$$2\sqrt{5} \times \sqrt{3} = 2\sqrt{15} \quad 7.75 = 7.75$$

$$\begin{aligned} 5^2\sqrt{6} \times 7^2\sqrt{3} &= 5 \times 7^2\sqrt{6 \times 3} \\ &= 35^2\sqrt{18} \\ &= 35 \times 3^2\sqrt{2} \\ &= 105^2\sqrt{2} \end{aligned} \quad 148.49 = 148.49$$



$$\sqrt[2]{5} \times \sqrt[3]{5} = \sqrt[2]{5} \times \sqrt[3]{5} = 5^{\frac{1}{2}} \times 5^{\frac{1}{3}} = 5^{\frac{5}{6}}$$

Can only multiply/divide like indexes.
Cannot multiply/divide unlike indexes.
Change Form, Add Exponents $3.82 = 3.82$

Distribute

$$3(5 + \sqrt{2}) = 15 + 3\sqrt{2}$$

$$(5 + \sqrt{7})\sqrt{7} = 5\sqrt{7} + 7$$

$$19.24 = 19.24$$

$$20.23 = 20.23$$

FOIL

$$(2 - \sqrt{3}) \times (1 + \sqrt{5}) = 2 + 2\sqrt{5} - 1\sqrt{3} - \sqrt{15}$$

$$0.867 = 0.867$$

$$\begin{aligned} (2 + \sqrt{3})^2 \\ (2 + \sqrt{3})(2 + \sqrt{3}) \\ \dots \end{aligned}$$

$$\begin{aligned} \frac{\sqrt[2]{6}}{\sqrt[2]{3}} &= \sqrt[2]{\frac{6}{3}} \\ &= \sqrt[2]{2} \end{aligned} \quad 1.41 = 1.41$$

$$\begin{aligned} \frac{10^2\sqrt{6}}{2^2\sqrt{3}} &= \frac{10^2}{2^2} \sqrt[2]{\frac{6}{3}} \\ &= 5^2\sqrt{2} \end{aligned} \quad 7.07 = 7.07$$

$$\frac{\sqrt{24}}{\sqrt{8}} = \frac{2\sqrt{6}}{2\sqrt{2}} = \frac{\sqrt{6}}{\sqrt{2}} = \sqrt{\frac{6}{2}} = \sqrt{3} \quad \sqrt{24} = 2\sqrt{6} \quad \sqrt{8} = 2\sqrt{2}$$

OR

$$\frac{\sqrt{24}}{\sqrt{8}} = \sqrt{\frac{24}{8}} = \sqrt{3} \quad \text{Simplify 1st}$$